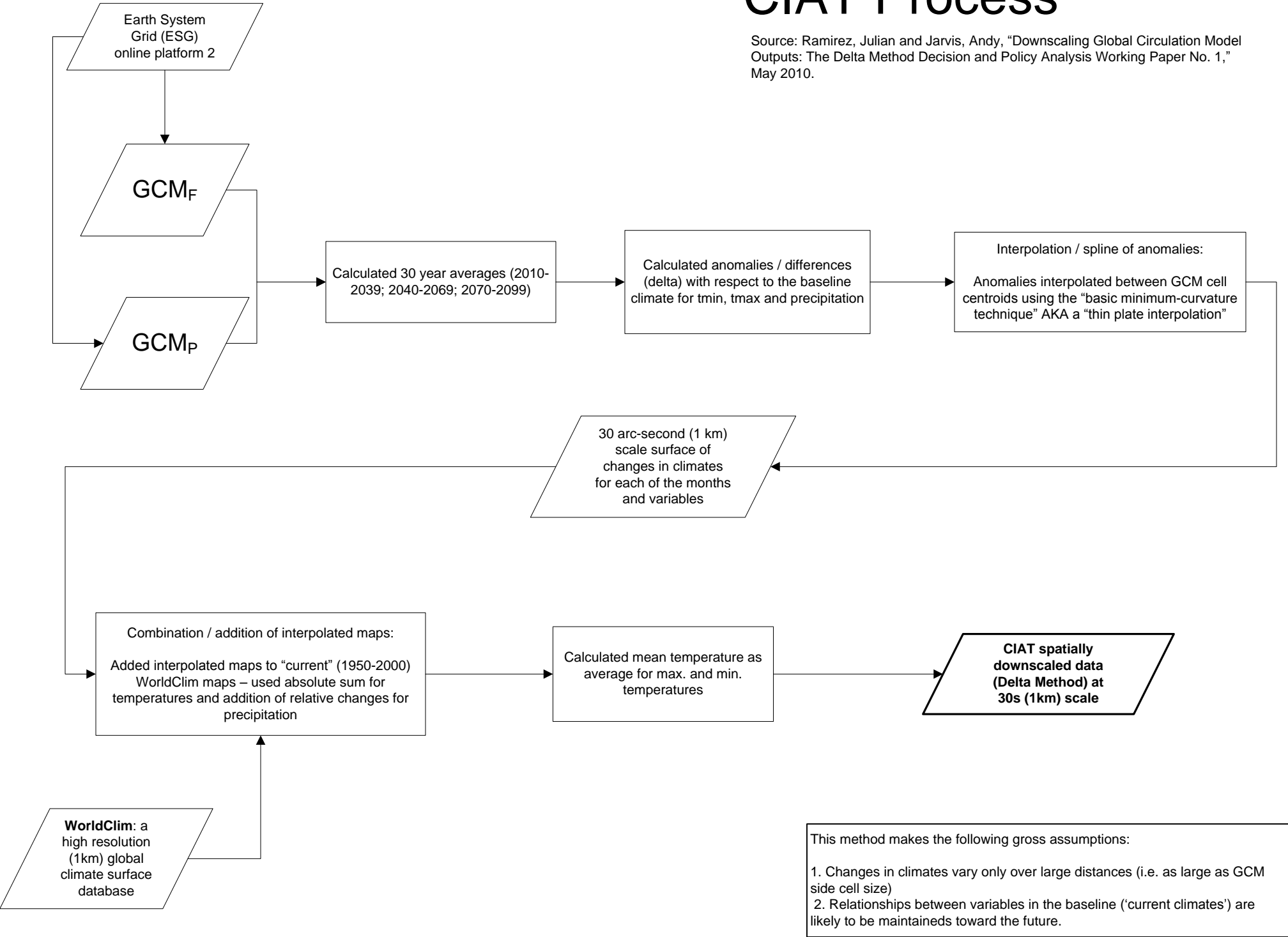


CIAT Process

Source: Ramirez, Julian and Jarvis, Andy, "Downscaling Global Circulation Model Outputs: The Delta Method Decision and Policy Analysis Working Paper No. 1," May 2010.



This method makes the following gross assumptions:

1. Changes in climates vary only over large distances (i.e. as large as GCM side cell size)
2. Relationships between variables in the baseline ('current climates') are likely to be maintained toward the future.